



Buckminster Bites

Newsletter



28TH JUNE 2024

Dates for your diary

Monday 1st July

- Year 2/3 Swimming.
- Choir, Cooking and Cricket after school club.

Tuesday 2nd July

- Moving Up Day - children in their new classes.
- Arts/Crafts after school club.

Wednesday 3rd July

- PTFA Summer Disco YrR-Yr6
5pm-6.30pm. £4 per child - please book your child's place on Arbor under "Trips".
- No Tennis, Cheerleading and Baking after school club.

Thursday 4th July

- 2.30pm Year R/1 Class Assembly.
- Parent Drumba.

Friday 5th July

- Year 6 Twinlakes Trip
- No Cricket after school club

Monday 8th July

- Trust Music Event - Mrs Orridge's choir
- No Choir and Cooking after school club.
- Cricket after school club.

Tuesday 9th July

- 2.15pm - Summer Concert - parents/carers invited to join us.
- Tennis after school club.
- No Arts/Crafts after school club.

Wednesday 10th July

- August 2024 New Starters transition afternoon 1.30pm-3pm.
- No Tennis, Cheerleading and Baking after school club.

Thursday 11th July

- No breakfast or after school club with Mrs Watkin today.
- Parent Drumba (if you have alternative childcare).

Friday 12th July

- Seaside Special - Change of lunch Menu
- 2pm Year 6 Leavers' Assembly
- No breakfast or after school club with Mrs Watkin today.
- No YrR/1 Cricket after school club.
- Last day of the summer term.





Buckminster Bites Newsletter



28TH JUNE 2024

Attendance

The Whole school attendance for this week was 99%.

We aim for our attendance to be 97% or above so this is fantastic. Thank you for your support.

Weekly Certificates

Star Reader

5Rs

Dinner

R & 1 - Everly
2&3 - Tyler
4, 5 & 6 - Callum

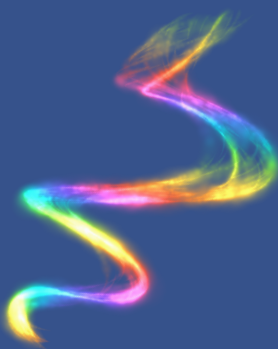
Rory
Henry
Bonnie

Alfred
Harriet
Luna

Well done to everyone who received a certificate today.

PTFA Summer School Disco

We look forward to seeing all the children at the PTFA School Disco on Wednesday 3rd July. Please book your child's place on Arbor under "Trips". Thank you.



Buckminster Primary School

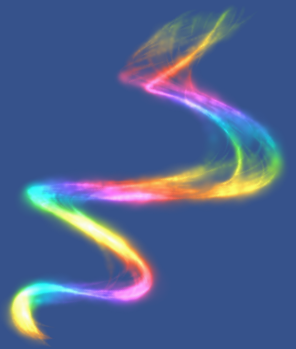
SUMMER DISCO

WEDS 3rd JULY - 5-6.30pm

FOOD & DRINKS QUIET SPACE DISCO FUN

YrR-Yr6
£4 per child
Pay by cash or via Arbor

BRING CASH ON THE NIGHT FOR FUN-TASTIC STALLS (50P PER STALL)

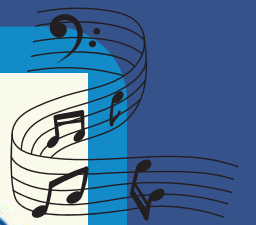




Buckminster Bites Newsletter



28TH JUNE 2024



BUCKMINSTER

summer concert 2024



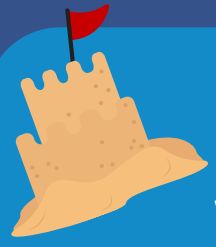
Tuesday 9th July 2024
At 2:15pm
On the school playground



Buckminster Bites Newsletter



28TH JUNE 2024

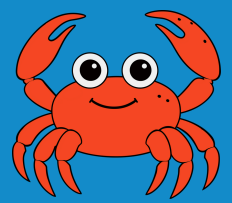


Friday 12th July Seaside Special Menu

We have a special change of lunch menu on the last day of term.

This is still free for children in Year R-2 and those entitled to Free School Meals.

Children in Pre-School and Year 3-6 can also join us for £2.55 per meal. Please top up your child's account on Arbor.



Seaside Special

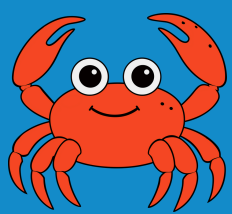
Friday 12th July

Main Course
Bubble Crumb Fish Bites
or
Quorn Dippers (V, VG)
Tomato ketchup
Served with Chips
Peas or Beans

Desert
Iced Lolly (V, VG)
Jambo Biscuit (VG)
Fruit and Yogurt available.

Why not join us for our theme day lunch

LTS Catering Services Part of Leicestershire Gauray Council www.leicestershire.gov.uk/school-food





Buckminster Bites Newsletter



28TH JUNE 2024



www.healthforkids.co.uk



Healthy Together Newsletter



Welcome to your latest Healthy Together newsletter

Hello and welcome to the fifth edition of your newsletter for parents/carers and school staff from Healthy Together, and the final one for the 2023/24 academic year.

In this update, you can find out about Leicestershire Partnership NHS Trust's ChatAutism service, newly released speech and language content and our animation to support your child if they are moving to secondary school.

Supporting your child's speech, language and communication development

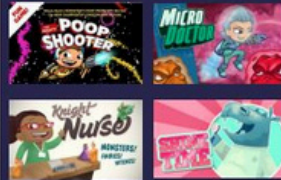
A series of new articles have recently been published on Health for Kids: Grownups, created in partnership with Leicestershire Partnership NHS Trust's Children's Speech and Language Service, to help support your child's communication development.

Click on the links below to access this brand new content:

- [How to support your child to understand language](#)
- [How to use choice boards](#)
- [How to use communication boards](#)
- [How to use signing](#)

Fun and educational games on Health for Kids

With summer approaching and the British weather unpredictable, there are a number of [fun and educational games](#) for children to play over on Health for Kids to keep them entertained if it's raining outside!



www.healthforkids.co.uk



In the Spotlight

Supporting your child as they move on to secondary school

With Year 6 pupils set to leave primary school behind in the coming weeks, we've created a [short animation](#) for parents with advice on how you can support your child as they make the move to secondary school.

Filled with lots of hints, tips and advice, hopefully you can help make the transition as smooth as possible for your child.



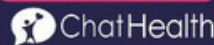
[Click here to view the 'Starting secondary school' animation](#)

Contact a school nurse by text message during the holidays

Leicestershire Partnership NHS Trust runs a dedicated, confidential and secure text messaging service called ChatHealth for parents/carers of children aged 0-11 in Leicestershire and Rutland, which enables you to get professional health advice and support.

Text a Public Health Nurse (School Nurse) on:

07520 615 382



Autism support services

Leicestershire Partnership NHS Trust provides digital support services for autistic people and their families living in Leicestershire and Rutland.

ChatAutism

Text 07312 277 097

with any autism related query and a qualified health professional will respond

Contact a health professional via the Healthy Together Helpline

You can also call to speak to the Helpline's qualified health and administrative professionals who offer easy to access, safe and free advice, support and signposting.

Call 0300 300 3001

Calls are answered from 9am – 4.30pm on weekdays, excluding bank holidays.



Autism Space is a website providing information and advice on a wide range of autism related topics, plus a directory of local support services